



**Jan Treeby**  
Head of Junior School

# International Baccalaureate (IB) Primary Years Programme (PYP)

## Years 1–6



### Key Concepts

- Form:** What is it like?
- Function:** How does it work?
- Causation:** Why is it as it is?
- Change:** How is it transforming?
- Connection:** How is it linked to other things?
- Perspective:** What are the points of view?
- Responsibility:** What are our obligations?

### Learner Profile Attributes

- Inquires
- Knowledgeable
- Thinkers
- Communicators
- Principled
- Open-minded
- Caring
- Risk takers
- Balanced
- Reflective

### Approaches to Learning

- Social skills
- Research skills
- Thinking skills
- Communication skills
- Self-management skills

### Approaches to Teaching

- Based on Inquiry
- Focused on conceptual understanding
- Developed in local and global context
- Focused on effective team work and collaboration
- Differentiated to meet the needs of all students
- Informed by formative and summative assessment

### Knowledge Interdisciplinary Themes

- Who we are
- Where we are in place and time
- How we express ourselves
- How the planet works
- How we organise ourselves
- Sharing the planet

### Central Idea

### Lines of Inquiry

#### The Learner

- Agency
- Learner profile
- Action
- Exhibition

#### Learning and Teaching

- Concepts
- ATL
- Inquiry

#### The Learning Community

- International mindedness
- Collaboration

### AGENCY PYP Learners have:

- Voice
- Choice
- Ownership



This diagram by unknown author is licensed under CCBY-SA-NC

### Action

- Participation
- Advocacy
- Social Justice
- Social Entrepreneurship
- Lifestyle Choices



**Jan Treeby**

Head of Junior School

# International Baccalaureate (IB) Primary Years Programme (PYP)

## Years 1–6

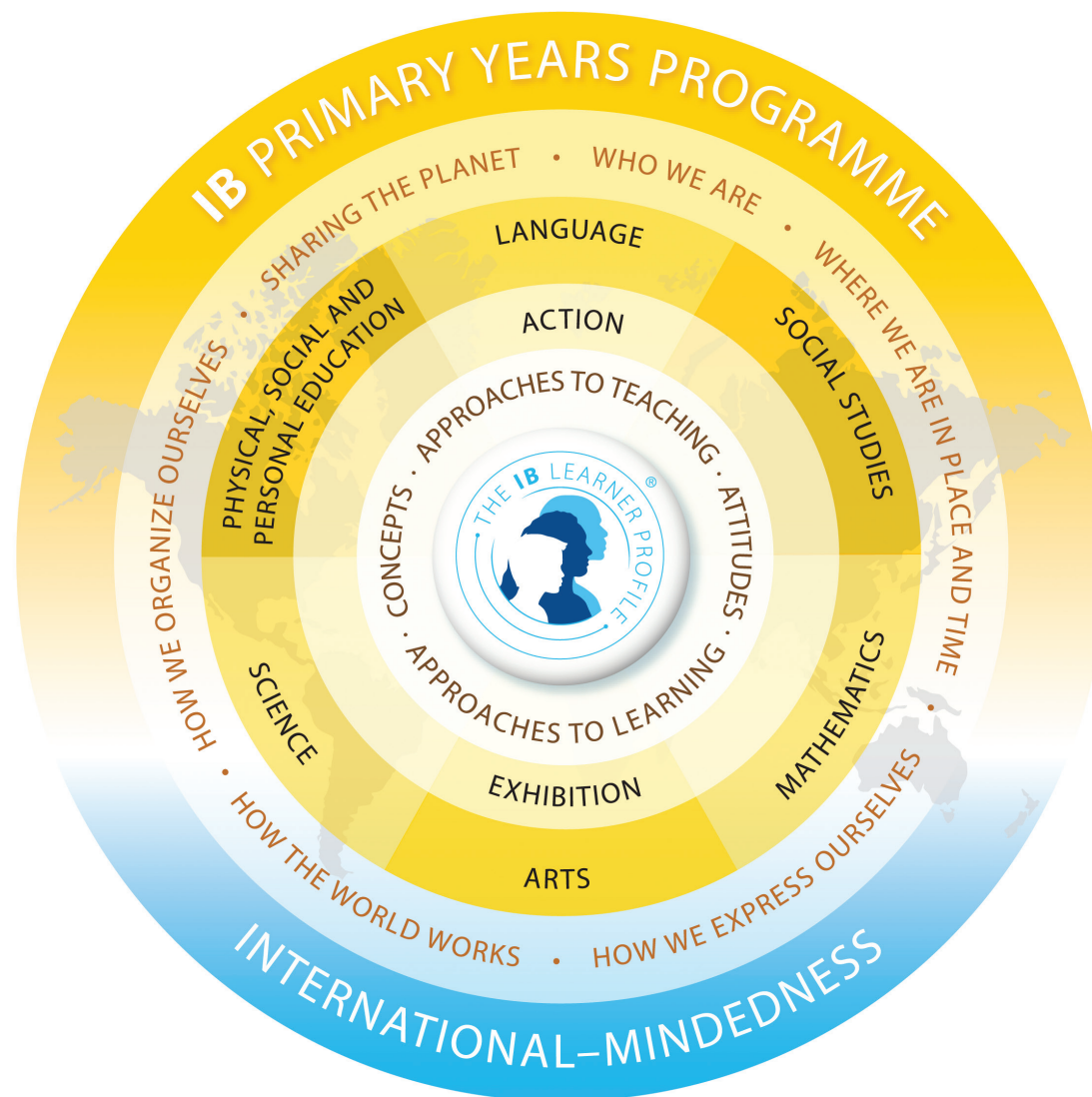
### International Baccalaureate (IB) World School

QMC is an International Baccalaureate (IB) World School, authorised to teach the Primary Years Programme (PYP). Learning is engaging, relevant, challenging and significant. The programme has a transdisciplinary approach meaning that learning is arranged around six significant and globally relevant themes: Who we are; How we organise ourselves; Where we are in place and time; How the world works; How we express ourselves; Sharing the planet. The PYP allows us to:

- Develop a range of skills that will assist children throughout their education.
- Foster independence in children whilst also developing skills to allow them to collaborate and think creatively.
- Weave our inquiries through other subject areas; children make real-life, meaningful connections that inspire them to take action and be agents of their learning.
- Encourage and support students to become independent in managing themselves, by regularly reflecting on their next steps for learning.

### IB Mission

*The International Baccalaureate aims to develop inquiring, knowledgeable and caring young people who help to create a better and more peaceful world through inter-cultural understanding and respect. These programmes encourage students across the world to become active, compassionate and lifelong learners who understand that other people, with their differences, can also be right.*



# What does PYP look like at each year level?



## Years 1–6

### Year 0–2

- Instill a love of learning and an enthusiasm to find out more. Building relationships with children and their families is vital in allowing us to achieve the best for each child as they face new challenges.
- Learning programme is a balance of literacy and mathematics, alongside our specialist programmes.
- Our learning spaces are vibrant, inspiring and interactive environments where the children can explore and express themselves through sensory learning experiences and more structured activities.

### Year 3–6

- Students continue to develop their independence and are encouraged to begin to think critically and reflectively as they continue to build confidence in themselves as learners.
- Develop strong work habits and positive social interactions.
- Continue to develop abilities in language and mathematics and balance academic endeavors with visual and performing arts, sport and science programmes.

- Technology is used to enhance our programme of learning, allowing students to be collaborative and creative. This balance allows us to foster individual talents and meet individual needs by providing tailored learning programmes to best support each child.
- Explore big concepts through different subject lenses and are encouraged to make connections across, as well as within, subject areas, wherever possible.
- Subject groups within the PYP that are taught in the Upper Primary include: languages, mathematics, science, the arts, social studies, religious education and personal, social and physical education.
- The programme of inquiry is carefully planned by teachers and is designed to give students the skills to take the lead in their own learning. Together with our students we establish what each child knows, what knowledge s/he has access to, and what knowledge s/he can build.
- Explore the world in which we live, ask questions, make discoveries and develop new understandings.
- Teachers work in collaboration to ensure that students across year levels receive a consistent program and support them as they begin to take more responsibility for their learning.

### Year 6

#### Year 6 Exhibition

Students in Year 6, who are in their final year of the PYP, carry out an extended, collaborative inquiry project, known as the Exhibition, under the guidance of their teachers.

The Exhibition represents a significant event in the life of both the school and student, synthesising the essential elements of the PYP and sharing them with the whole school community.

It is an opportunity for students to exhibit the attributes of the Learner profile that have been developing throughout their engagement with the PYP.

It is a culminating experience marking the transition from PYP to further steps in education. Students are given considerable flexibility in their choice of real-life issues or problems to be explored or investigated in the Exhibition.

#### Beyond Year 6

We ensure that students are well-prepared for the transition to Year 7. We have a day when Year 6 Discover Year 7. MYP Middle Years Programme is the next step for us as a IB world school.